

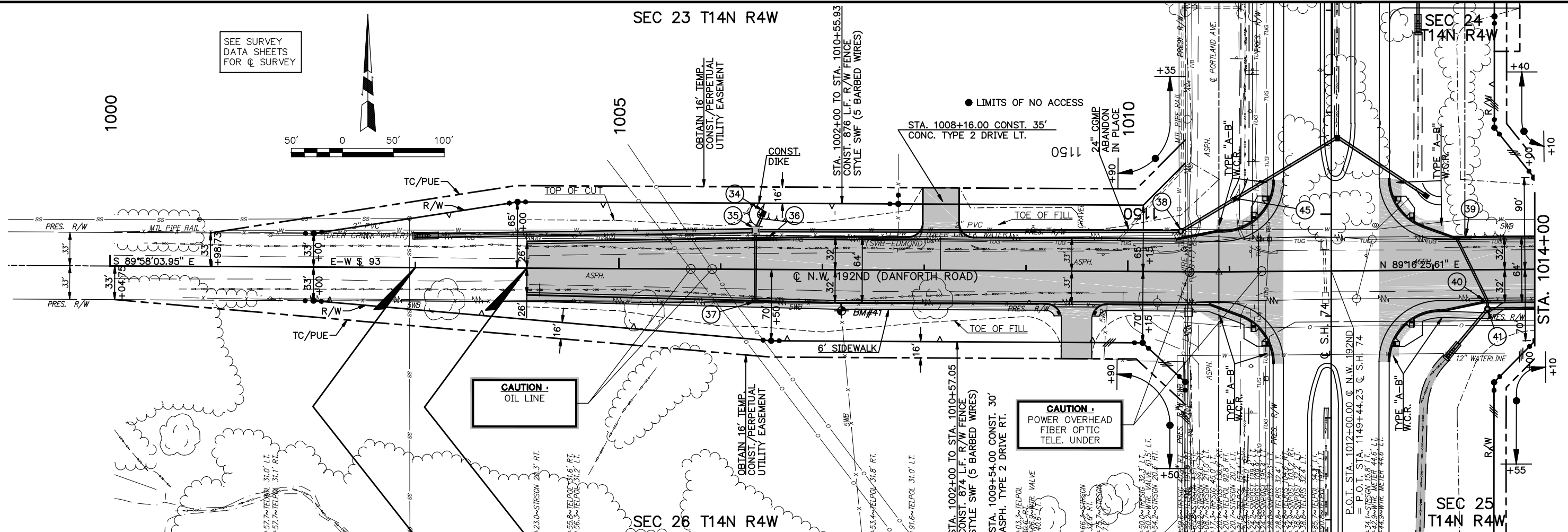
SEC 23 T14N R4W

SEC 24 T14N R4W

SEC 25 T14N R4W

SEC 26 T14N R4W

SEE SURVEY DATA SHEETS FOR C SURVEY



1085	BM#40-R.R. SPK. IN 12" ELM STA. 1143+97.90 @ S.H. 74 SURVEY, 260.40' LT. ELEV. = 1059.33	STR. NO. 34 ~ STA. 1006+41.68 CONST. G.P.I. TYPE-1 DES. 1 W/ PIPE RAIL, 54.89' LT., STUB 14 L.F. 24" RCP INTO STR. 35 INLET E=1065.80, E=1062.69, D.S. E=1060.94	STR. NO. 38 ~ STA. 1010+51.78 CONST. 4' DIA. M.H., 39.51' LT. STUB 414 L.F. 30" RCP INTO STR. 35 T.R.=1078.15, E=1069.22, D.S. E=1060.80	BM#42-80D SPK. IN P. POLE STA. 1153+98.10 @ S.H. 74 SURVEY, 30.30' LT. ELEV. = 1084.53	1085										
1080					1080										
1075		STR. NO. 35 ~ STA. 1006+33.93 CONST. 6'x6' JUNCT. BOX, 37.94' LT. STUB 332 L.F. 43"x26" RCPA W/C.E.T. INTO DITCH LT. T.R.=1067.32, E=1059.80, D.S. E=1058.15			1075										
1070		STR. NO. 36 ~ STA. 1006+34.14 CONST. C.I. DES. 2(D), 30.60' LT. STUB 4 L.F. 18" RCP INTO STR. 35 T.C.=1066.98, GRATE=1066.27 E=1061.60, D.S. E=1061.56			1070										
1065		STR. NO. 37 ~ STA. 1006+34.14 CONST. C.I. DES. 2(D), 30.60' RT. STUB 58 L.F. 18" RCP INTO STR. 36 T.C.=1066.98, GRATE=1066.27 E=1062.18, D.S. E=1061.60			1065										
1060					1060										
1055					1055										
1050					1050										
1045					1045										
1040					1040										
999+00	1000+00	1001	1002	1003	1004	1005+00	1006	1007	1008	1009	1010+00	1011	1012	1013	1014+00